

VISAMO × INFOLLION

THE LONG GAME

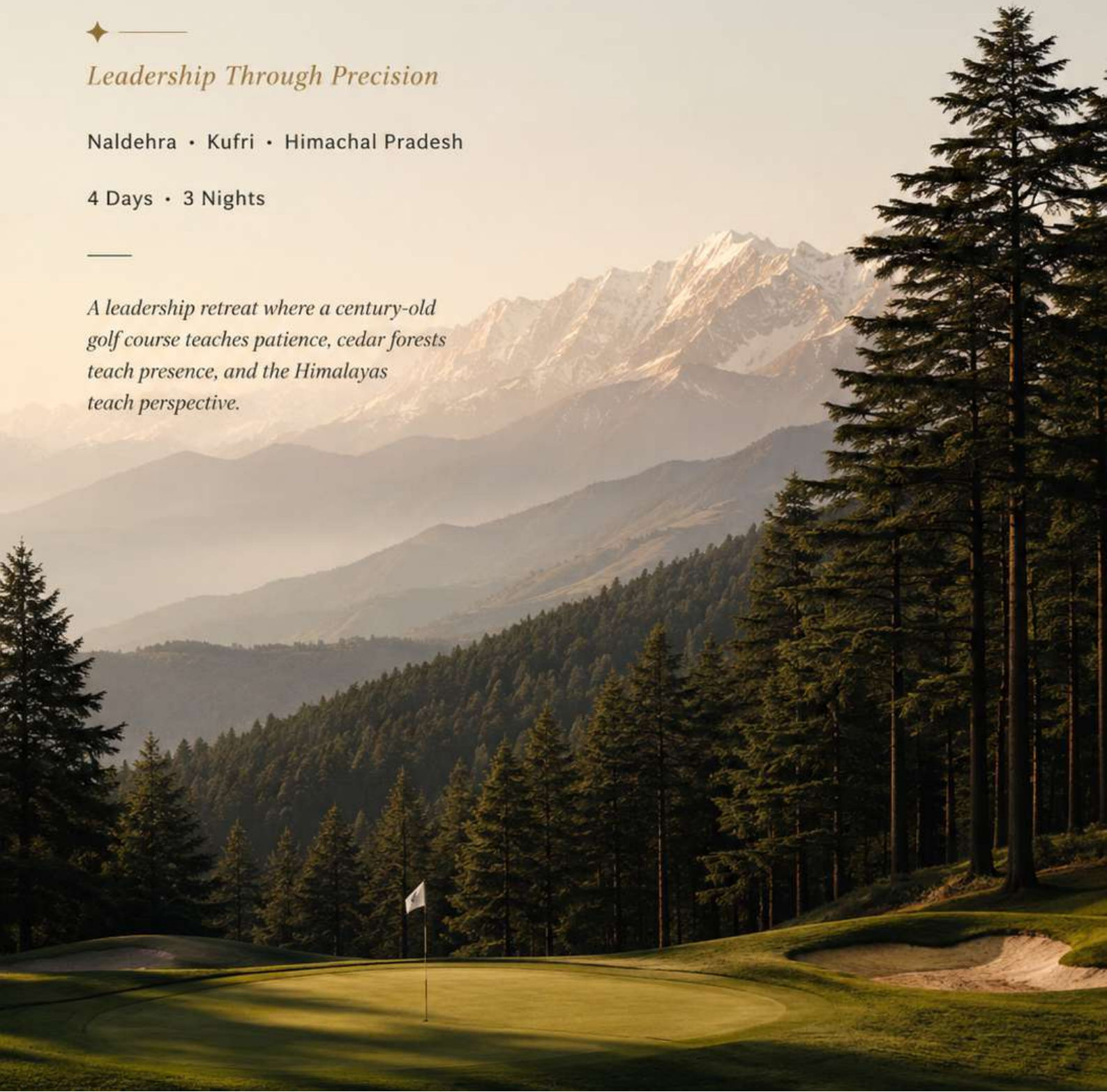


Leadership Through Precision

Naldehra • Kufri • Himachal Pradesh

4 Days • 3 Nights

*A leadership retreat where a century-old
golf course teaches patience, cedar forests
teach presence, and the Himalayas
teach perspective.*





Why Naldehra & Kufri

Perched high above Shimla and surrounded by centuries-old deodar forests, Naldehra is home to one of India's oldest golf courses — a place where patience matters more than speed and where every shot rewards attention.

Over four days, this journey combines leadership learning, golf fundamentals, mountain experiences, and meaningful conversations designed to help teams reconnect with purpose and return with fresh perspective.



PRECISION

Learn the value of deliberate action through one of the world's most strategic sports.



LEADERSHIP

Expert-led learning experiences designed around decision-making, trust, and performance.



NATURE

Cedar forests, Himalayan ridgelines, mountain meadows, and open skies.



PERSPECTIVE

The distance from routine that creates space for clearer thinking.

DAY 01

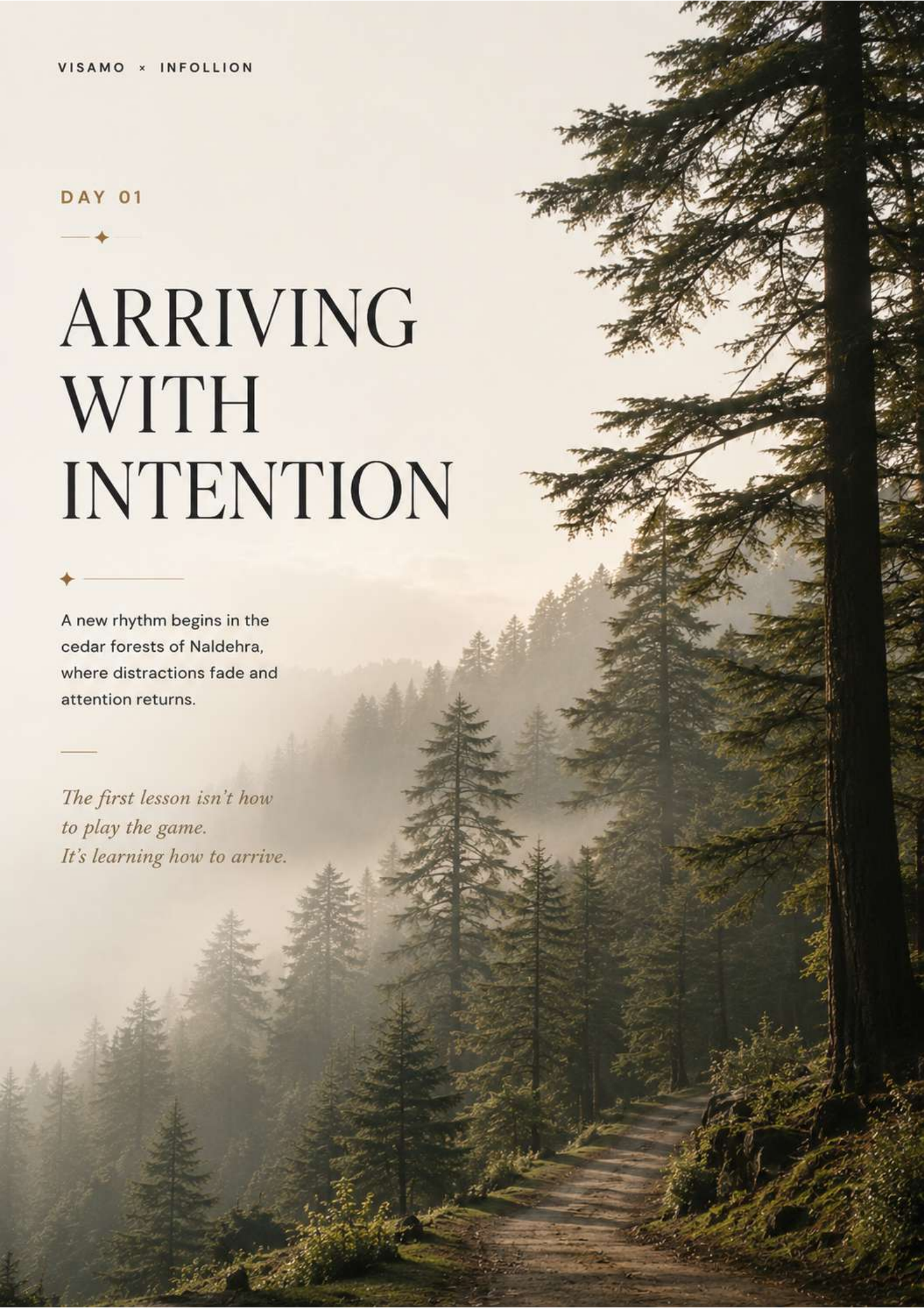
◆

ARRIVING WITH INTENTION

◆

A new rhythm begins in the cedar forests of Naldehra, where distractions fade and attention returns.

*The first lesson isn't how
to play the game.
It's learning how to arrive.*





THE DAY AHEAD



LEADERSHIP SESSION

Presence & Awareness

Explore the foundations of intentional leadership through a facilitated session focused on self-awareness, attention, and clarity in decision-making.



SIGNATURE EXPERIENCE

Golf Fundamentals Workshop

Learn the fundamentals of golf alongside professional instructors while discovering how patience, focus, and consistency shape both performance and leadership.



NATURE IMMERSION

Cedar Forest Walk

A guided walk through Naldehra's deodar forests, offering space to slow down, observe more carefully, and gain fresh perspective.



EVENING GATHERING

Himachali Heritage Dinner

An evening of regional cuisine, local stories, and meaningful conversation that sets the tone for the journey ahead.



DAY 01 TAKEAWAY

Presence before performance.

The strongest leaders are not always those who move first, but those who learn to pay attention before they act.



DAY 02



READING THE TERRAIN

Every course reveals itself to those
who take the time to study it.
The same is true of leadership.

*The best decisions aren't made quickly.
They're made with awareness of
the terrain ahead.*



THE DAY AHEAD

MORNING PRACTICE

Forest Silence Walk

Begin the day with a guided walk through the cedar forests in complete silence. A simple practice designed to sharpen observation, awareness, and intentional thinking.

LEADERSHIP SESSION

Decision-Making Under Uncertainty

Explore practical frameworks for navigating ambiguity, assessing risk, and making confident decisions when outcomes are unclear.

SIGNATURE EXPERIENCE

Golf Strategy & Nine-Hole Challenge

Move beyond technique and discover the strategic side of golf. Through a guided nine-hole challenge, participants learn the importance of judgement, patience, and course management.

EVENING GATHERING

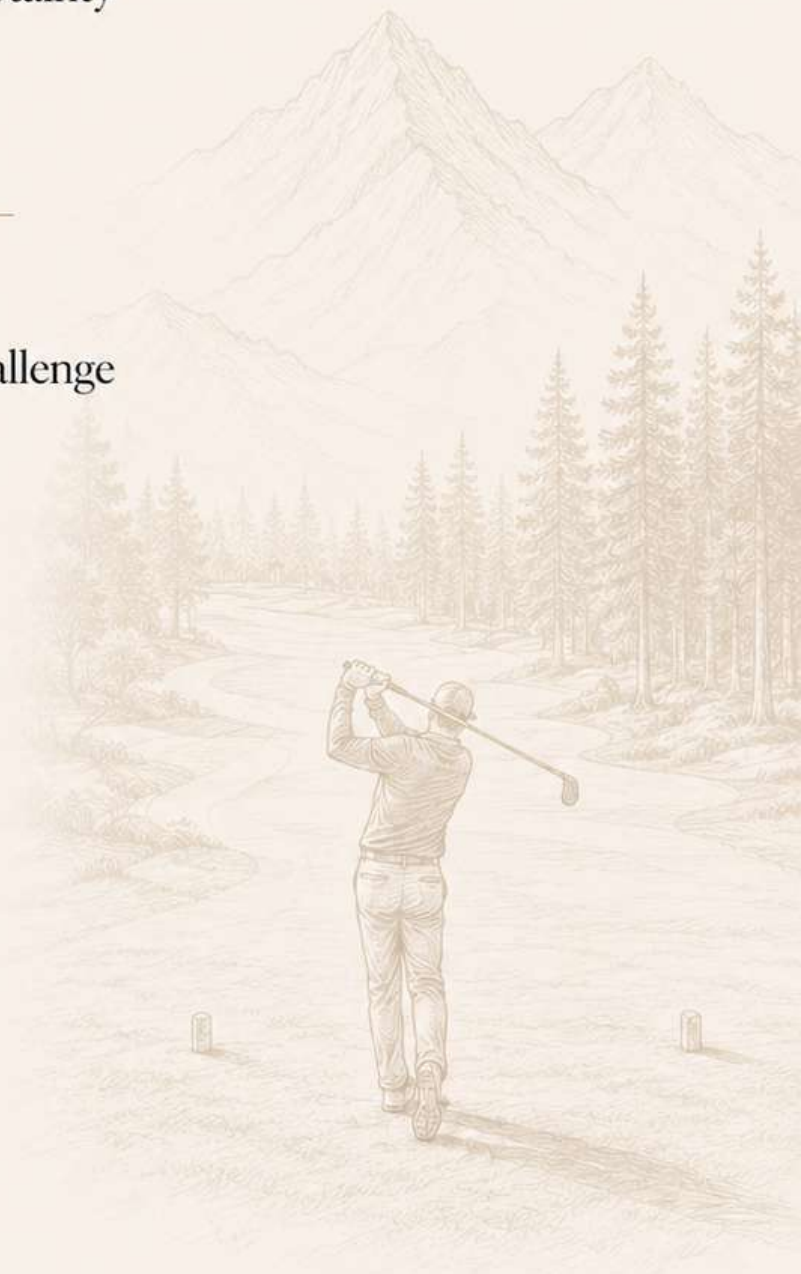
Himalayan Fireside Barbecue

An open-fire dining experience beneath the stars, bringing together mountain flavours, meaningful conversations, and shared reflections from the day.

DAY 02 TAKEAWAY

Clarity comes from observation.

The strongest decisions are often made by those who take the time to understand the terrain before making their move.



DAY 03



LEADING WITH PRESENCE



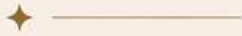
The most influential leaders are not
always the loudest.

They are the ones who create trust,
bring clarity, and remain grounded
when it matters most.



*Presence is not about
commanding attention.
It's about earning it.*





THE DAY AHEAD

◆ MORNING PRACTICE

Meditation For Focus

A guided mindfulness practice designed to strengthen attention, emotional awareness, and clarity under pressure.

◆ MOUNTAIN EXPERIENCE

Summit Reflection Hike

A scenic Himalayan hike creating space for reflection, perspective, and meaningful conversation.

◆ LEADERSHIP SESSION

Executive Presence & High-Trust Leadership

Learn how leaders build trust, communicate with intention, and influence through presence and credibility.

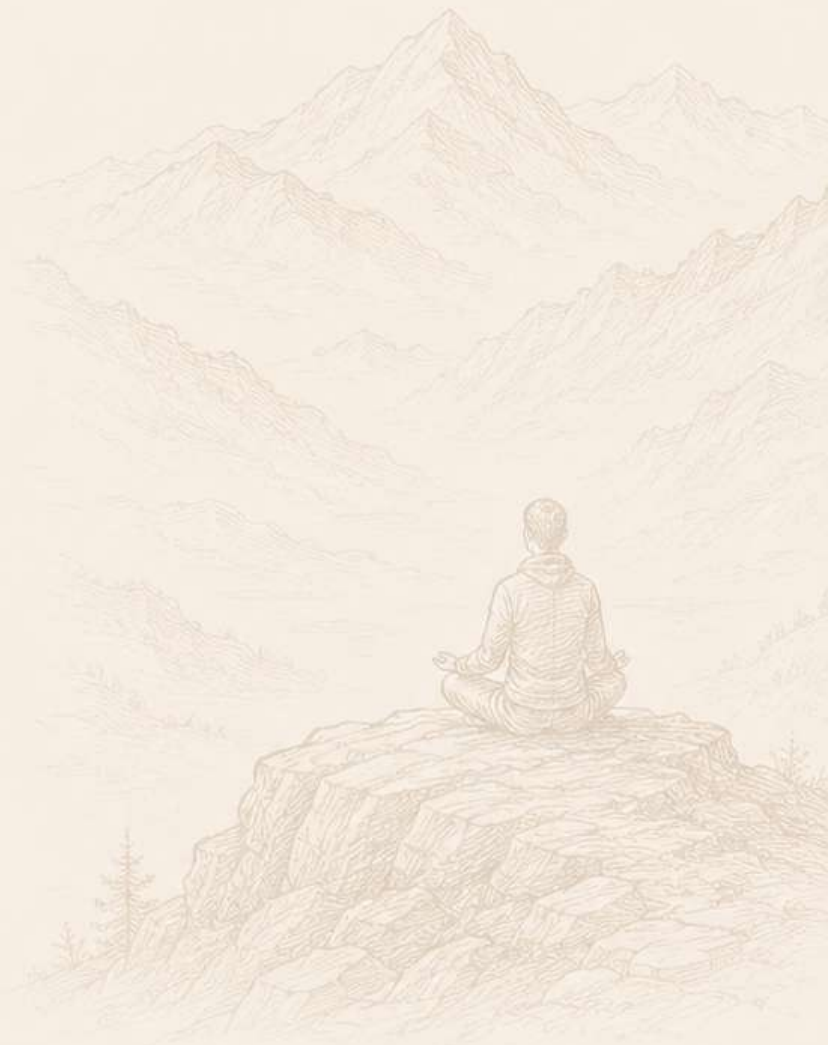
◆ EVENING GATHERING

Stargazing & Mountain Campfire

An evening beneath Himalayan skies for reflection, storytelling, and shared learning.

◆ DAY 03 TAKEAWAY

Influence begins long before words are spoken.



DAY 04



PLAYING THE LONG GAME



Leadership is rarely defined by a single decision.
It is shaped by the choices we make consistently,
long after the moment has passed.



*The most meaningful journeys are measured
not by speed, but by direction.*





THE DAY AHEAD



SCENIC DRIVE

Drive to Kufri

We'll move towards Kufri and enjoy a scenic drive through the hills, taking in breathtaking views and refreshing mountain air.



EXPERIENCE ACTIVITY

Horse Riding Experience

Enjoy an invigorating horse riding experience amidst the beautiful landscapes of Kufri, connecting with nature in a unique way.



LEADERSHIP CIRCLE

Leadership Circle in Nature

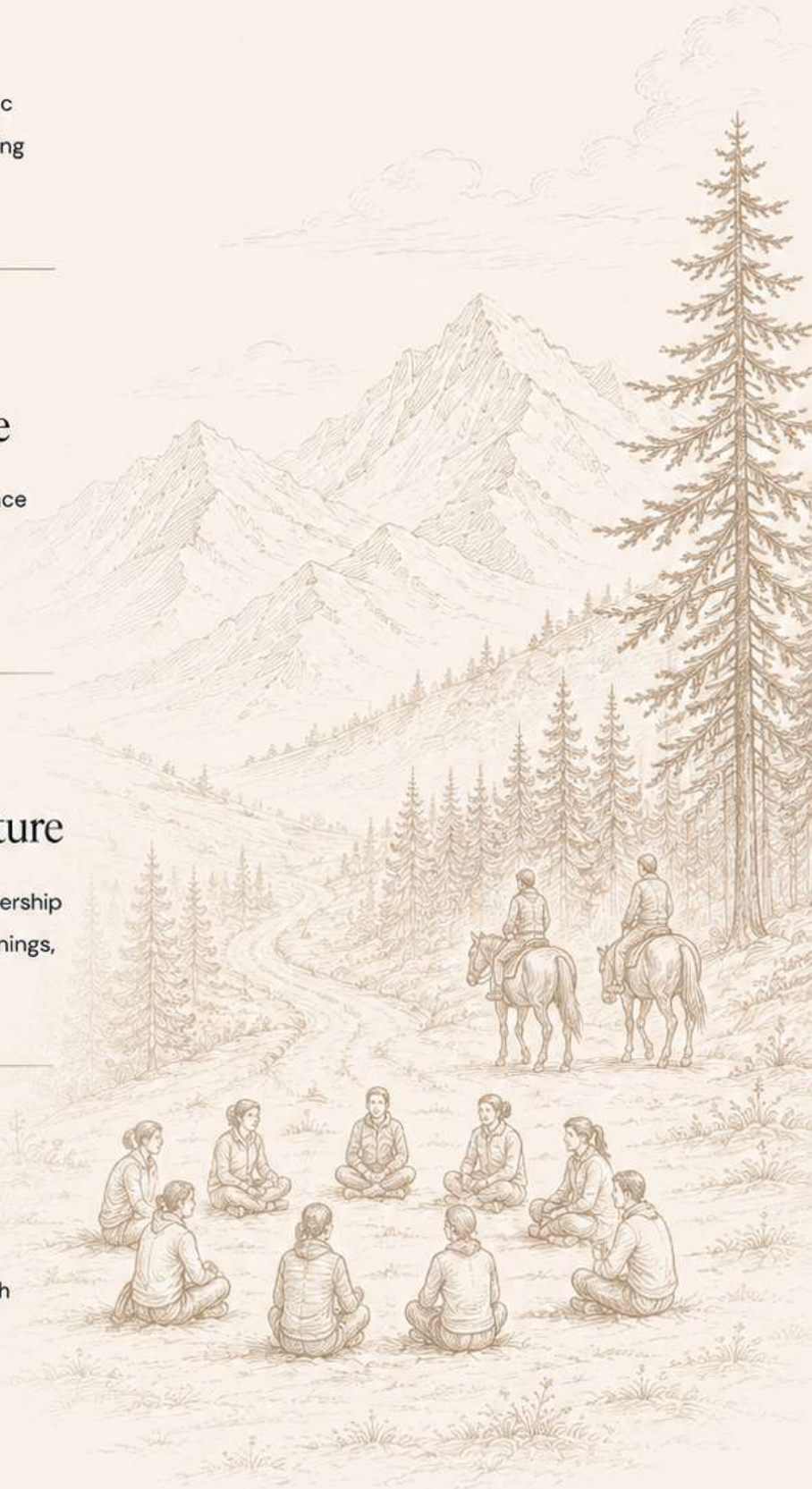
Gather in an open, natural setting for a leadership circle — sharing insights, reflecting on learnings, and strengthening our collective purpose.



FAREWELL & GOODBYE

Farewell & Goodbye

Close the journey with gratitude and warmth as we celebrate connections, share final reflections, and say goodbye.



WHAT YOU TAKE BACK

Beyond Golf. Beyond The Mountains.

Over four days in Naldehra, leadership conversations, time in nature, and lessons from golf came together to create clarity, perspective, and meaningful growth.

YOU LEAVE WITH

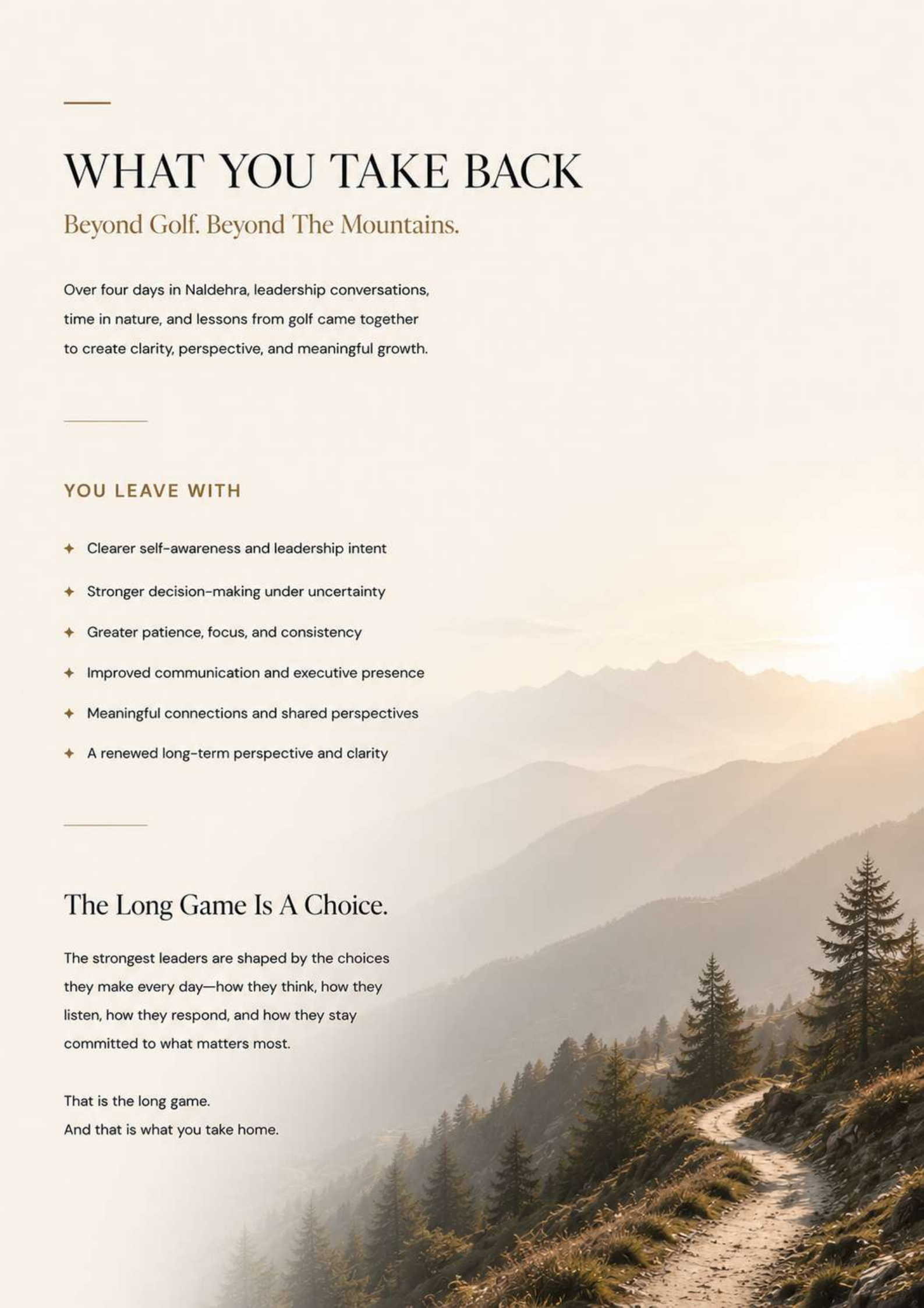
- ◆ Clearer self-awareness and leadership intent
- ◆ Stronger decision-making under uncertainty
- ◆ Greater patience, focus, and consistency
- ◆ Improved communication and executive presence
- ◆ Meaningful connections and shared perspectives
- ◆ A renewed long-term perspective and clarity

The Long Game Is A Choice.

The strongest leaders are shaped by the choices they make every day—how they think, how they listen, how they respond, and how they stay committed to what matters most.

That is the long game.

And that is what you take home.



THE PARTNERSHIP

This journey brings together two complementary strengths:
retreat experience and leadership development.

Visamo creates the environment for reflection and connection.
Infollion transforms those moments into meaningful leadership learning.

Together, we design journeys that
leave with perspective, not just memories.

VISAMO

Designing purposeful retreats and experiences that help leaders step away, reset, and reconnect with what matters.

- ◆ Retreat Design & Curation
- ◆ Hospitality & Guest Experience
- ◆ Signature Experiences
- ◆ End-to-End Retreat Execution

INFOLLION

Building leadership capability through insightful conversations, expert-led sessions, and practical frameworks for real-world impact.

- ◆ Leadership Facilitation
- ◆ Executive Learning Frameworks
- ◆ Reflection & Application
- ◆ Expert-Led Development Sessions

Visamo creates the experience.
Infollion creates the learning.

Together, we create leadership journeys
that stay with you long after the retreat ends.

INVESTMENT & INCLUSIONS

A thoughtfully curated leadership retreat designed to inspire perspective, strengthen leadership, and create lasting impact.

INVESTMENT

₹20,000 ONWARDS

PER PERSON

Premium Mountain Stays

3 nights in carefully selected stays across Naldehra and Kufri.

Golf Learning Journey

Professional instruction and guided experiences at Naldehra Golf Course.

Expert-Led Leadership Sessions

Facilitated learning focused on presence, decision-making, and leadership.

Curated Experiences

Forest walks, summit reflections, mindfulness practices, and stargazing.

End-to-End Hosting Throughout

Complete retreat support by the Visamo × Infollion team.

THE LONG GAME IS A CHOICE.